

# ***All Around Australian Shepherd Club***

***ASCA Farm Trial – Sheep Only – 2 Days***

***Limit of 15 runs per day***

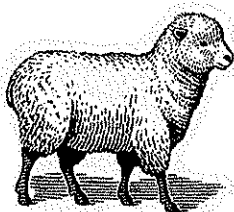
***At the home of***

***Sue Scott & Rick Hardin***

***28485 Mid Jones Rd***

***Calhan, Colorado***

***April 17<sup>th</sup> and 18<sup>th</sup>, 2010***



**Judges: Saturday – Kaye Harris**

**Sunday – Wayne Harris**

**Course Director: *Rick Hardin***

**Entry Clerk: *Sue Scott, 28485 Mid Jones Rd, Calhan, CO 80808***

**Pre-Entries open March 15<sup>th</sup>, close on April 3<sup>rd</sup>, 2010 (postmarked)**

**Classes offered: Open Sheep and Advanced Sheep**

**Pre Entry fee is \$35.00, day of trial entry fee is \$40.00 (if runs are still available)**

- Make checks Payable to AAASC or All Around ASC
- Day of trial entry fees applicable on April 5<sup>th</sup> and forward
- Run order will be drawn at close of entries on day of trial
- NO refunds after close of entries, unless your run is sold to someone on wait list.
- No entry accepted without a completed signed ASCA entry blank and entry fee.
- Entry forms and trial rules/regulations are available at [www.asca.org](http://www.asca.org).
- Course requirements and scoring are included in this flier see page 3.
- Bitches in heat will run in order
- If any questions please call Sue 719-338-0065 or email [allaroundasc@aol.com](mailto:allaroundasc@aol.com)
- Bring shade and chairs
- Food will be available, restaurants in Calhan as well

## **SCHEDULE:**

- Trial Registration and Check in: 7:00 to 7:45 a.m.
- Handler/Judges Meeting: 8:00 a.m. (will include a walk through)
- Trial will begin immediately after the meeting and walkthrough

**Awards and deluxe flat ribbons for 1<sup>st</sup> thru 4<sup>th</sup> place**

**Qualifying ribbons for all qualifying scores.**

## General Information

- Insufficient funds will result in a \$25.00 fee. Entrants who stop payment will be placed on a cash-only basis with AAASC. Entrants will have five (5) days to make good on any insufficient funds with a money order, cashiers check or cash. Failure to make good on insufficient funds will result in your entry being marked invalid and all awards, legs, titles earned at this trial being withheld.
- The Course Director, Members of AAASC and the owners of the host facility assume no responsibility for any loss, damage or injury sustained by any exhibitor, handler, dog, property, child or spectator. This trial is being held on private property. You understand by your attendance and/or entry that the Show/Trial Committee have the right to refuse or excuse any entry for good cause. Good cause would be any violation of the ASCA rules.
- Entry fees will not be returned if the show cannot be opened or be completed due to riots, civil disturbances, acts of God, public emergencies or other events beyond the control of HPASC. Entry fees will not be refunded if the dog is absent, disqualified, excused or barred from competition by ASCA, Course Director or the Judge.
- Remind children to stay back from the arena, away from crates and x-pens and to ALWAYS ask before running up to or petting a dog. We appreciate well-mannered, respectful children and don't tolerate behaviors to the contrary.
- When not in the arena, ALL dogs must either be crated, or on lead and under control at all times.
- All Exhibitors MUST pickup after their dog and setup.
- Non-ASCA dogs may enter the stock trial without a tracking number; however, only those with a tracking number will be awarded ASCA titles upon completing the title requirements.
- Tracking number request forms are available at [www.asca.org](http://www.asca.org) and will be available at the registration and check-in table. They can be turned in with your entry form.
- Limit of 15 runs each day with a 20 minute time limit to complete required course. Time warnings at 10 and 3 minutes remain.
- Substitutions are allowed providing the dog is owned by same owner.
- Exhibitor agrees by participation to pay replacement cost or vet fee as applicable for injury or death of an animal. Replacement per sheep is \$150.

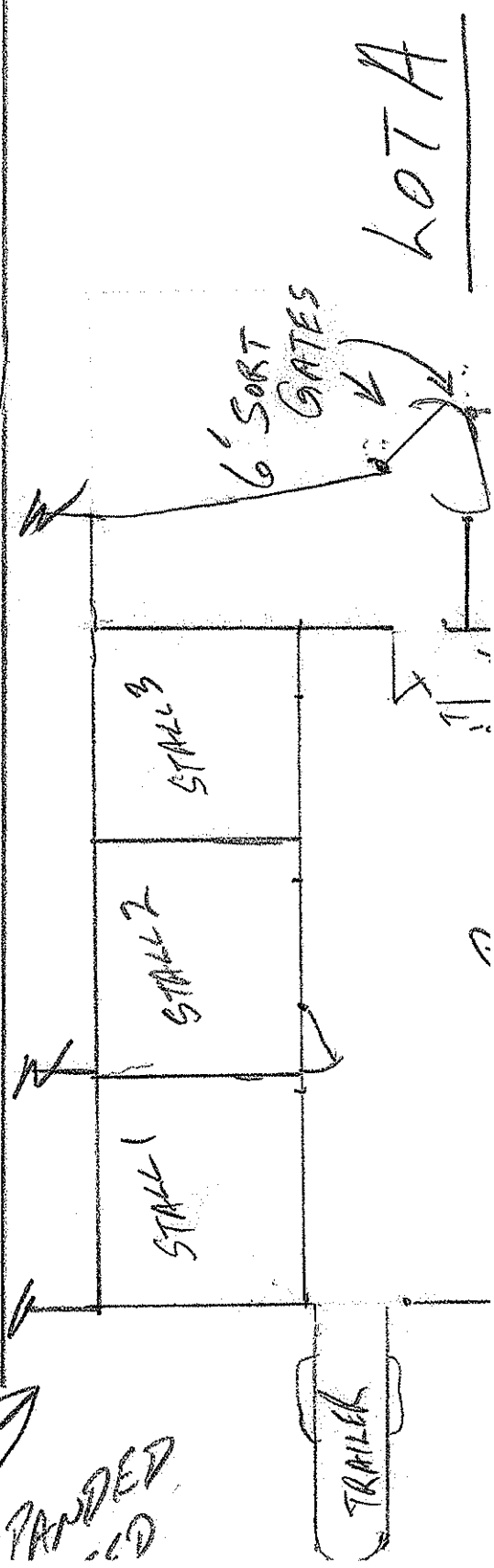
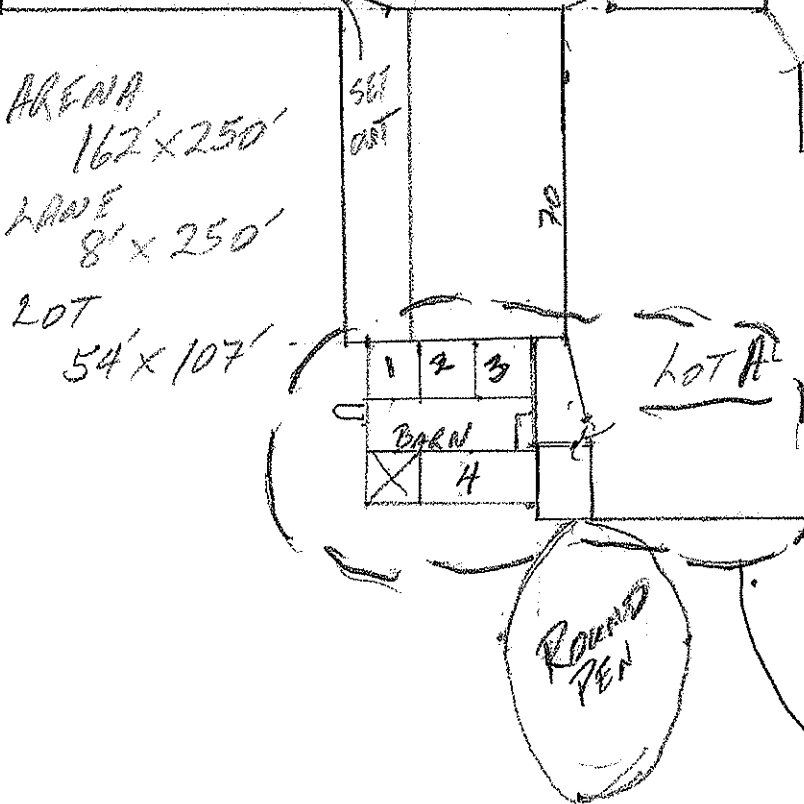
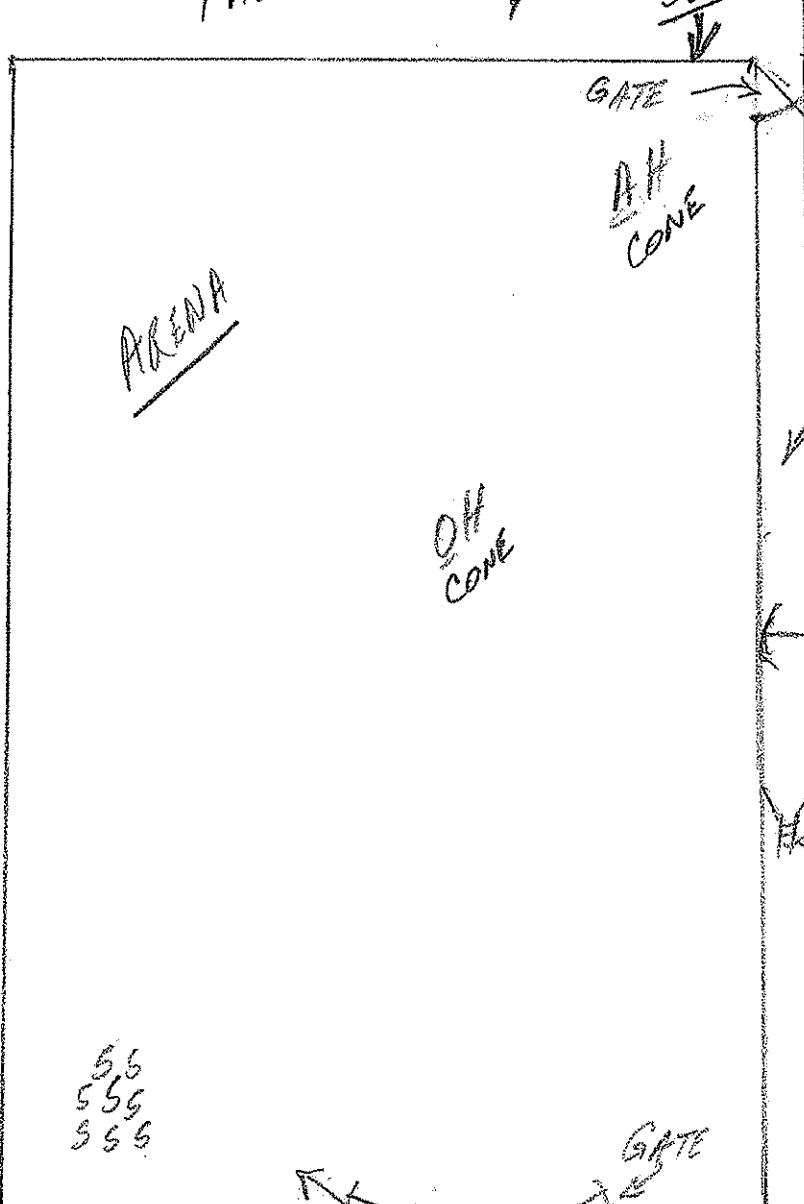
All Around ASC Farm Trial  
4/17,18/2010 Calhan, CO

1. Eight head of sheep will be set out into the Arena. There will be three ewes and five yearling lambs. The handlers will begin at the southwest corner of the arena. Advanced handlers send the dog from the AH cone for the 260 feet Gather. Open handlers can move to the OH cone which is half of the Gather distance. (Gather = 25 pts)
2. The sheep are moved through the 12foot gate in the southwest corner into the Lane (8ft wide). Advanced handlers must stay in the Arena and allow the dog to move the stock north to the Lane Gate. Open handlers may go with the dog in the lane. The sheep are moved through the Lane Gate closing the gate behind. Advanced handlers will be able to operate the Lane Gate from inside the Arena. (Pen work = 10 pts) The sheep are then driven across the bridge (4x8ft). (Additional task#1 = 15 pts)
3. The sheep are then driven into the Check Chute set up inside Lot A. The dog must hold the back side of the Check Chute while the handler marks the three head (ewes) to sort. (Chute = 25 pts)
4. All sheep are moved through Lot A into the Sort Pen and into the Round Pen opening and closing all gates. The handlers may then set the two- 6ft sort gates. The sheep are moved back into the Sort Pen. The three ewes previously marked are sorted and moved into the barn. The five unmarked yearling lambs are used for the last task. (Sort = 25 pts; Pen work = 15 pts)
5. Day 1:  
The last task will be moving the lambs from the sorting pen to the hallway of the barn and loading them onto the trailer at the end of the barn. (Additional Task#2 = 15 pts)
6. Day 2:  
The last task will be moving the lambs from the sorting pen through the footbath located in Stall 4 of the barn. (Additional Task #2 = 15 pts)

The time limit for the Farm Trial will be 20 minutes.

The Tie-breakers will be:

1. Gather Score
2. Sort Score
3. Last Task Score



## **TRIAL SITE DIRECTIONS:**

Since most people utilize Map Quest, a GPS or have been to the site before I will give a general idea of how to get here but for details drop me an email or give me a call.

From Denver: take I-25 south to Interquest Parkway east to Powers Blvd south to Woodmen Rd east to Hwy 24, than follow directions below from the east.

From Pueblo: take I-25 north to Hwy 24 EAST, this will jog onto Powers Blvd north (left) and then jog again east on to Platte / Hwy 24 heading east. Follow directions below from the east.

From the West take Highway 24 eastbound to Judge Orr Road (traffic light), which is just a few miles east of the town of Falcon, head east (right) on Judge Orr, cross over Ellicott Hwy (stop sign) continue to Soap Weed Rd, take a right heading south to Mid Jones Road, turn left (east), site is about 1 mile on the right, white house, white garage, white barn near road and steel barn. If you go too far you will cross Calhan Road

From the East: take Highway 24, to Calhan, take Calhan Hwy south from Hwy 24 (on the east side of town), cross over Judge Orr Rd (stop sign) onto Calhan Road (dirt) which curves (be careful) take right on to Mid Jones Rd, site is second place on the left. (Note Hwy 24 to site is about 10 miles)

---

Hotel in Calhan: Econolodge on Hwy 24 east of Calhan. 719-347-9594. The website says it is pet friendly but there is an additional pet fee, please check with them.

There is also room for RVs/Campers on-site – dry camping, water available

**All Around ASC Farm Trial**  
**4/17,18/2010 Calhan, CO**

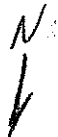
1. Eight head of sheep will be set out into the Arena. There will be three ewes and five yearling lambs. The handlers will begin at the southwest corner of the arena. Advanced handlers send the dog from the AH cone for the 260 feet Gather. Open handlers can move to the OH cone which is half of the Gather distance. (Gather = 25 pts)
2. The sheep are moved through the 12foot gate in the southwest corner into the Lane (8ft wide). Advanced handlers must stay in the Arena and allow the dog to move the stock north to the Lane Gate. Open handlers may go with the dog in the lane. The sheep are moved through the Lane Gate closing the gate behind. Advanced handlers will be able to operate the Lane Gate from inside the Arena. (Pen work = 10 pts) The sheep are then driven across the bridge (4x8ft). (Additional task#1 = 15 pts)
3. The sheep are then driven into the Check Chute set up inside Lot A. The dog must hold the back side of the Check Chute while the handler marks the three head (ewes) to sort. (Chute = 25 pts)
4. All sheep are moved through Lot A into the Sort Pen and into the Round Pen opening and closing all gates. The handlers may then set the two- 6ft sort gates. The sheep are moved back into the Sort Pen. The three ewes previously marked are sorted and moved into the barn. The five unmarked yearling lambs are used for the last task. (Sort = 25 pts; Pen work = 15 pts)
5. Day 1:  
The last task will be moving the lambs from the sorting pen to the hallway of the barn and loading them onto the trailer at the end of the barn. (Additional Task#2 = 15 pts)
6. Day 2:  
The last task will be moving the lambs from the sorting pen through the footbath located in Stall 4 of the barn. (Additional Task #2 = 15 pts)

The time limit for the Farm Trial will be 20 minutes.

The Tie-breakers will be:

1. Gather Score
2. Sort Score
3. Last Task Score

PASTURE



SW  
↓

GATE

A.H  
CONE

ARENA

OH  
CONE

LANE

GATE

BRIDGE

LOT A

6' SORT  
GATES

SORT  
PEN  
12x16

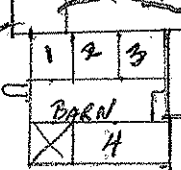
55  
555  
355

GATE

CHECK  
CHUTE

ARENA  
162'x250'  
LANE  
8'x250'

LOT  
54'x107'



LOT A

ROUND  
PEN

STALLS

STALLS

STALLS

BARNS

FOOT  
BATH  
STALLS  
4  
24x24  
12

WOOD  
PEN

TRAILER

EXPANDED  
ROTATED  
90