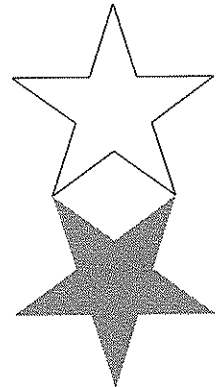
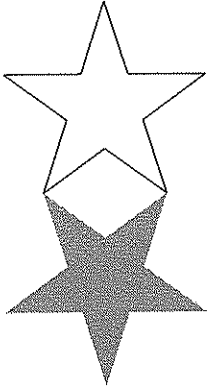


LONE STAR AUSTRALIAN SHEPHERD CLUB

ALL BREED STOCK DOG TRIAL Cattle and Sheep Only

Two-Day ASCA Sanctioned Arena Trial
*Sanctioning Pending
Saturday, March 31 & Sunday, April 1, 2012



Where:

John & Norma Hart
Memac Ranch
988 County Road 182
Gainesville, TX 76241
Ph: 670-736-8607

Course Director:

Marcus Krieger
5601 White Fence Rd.
Canyon, TX 79015
Ph: 806-367-1592

Event Information:

Date	Trial time	Stock	Judge	Course
Saturday, March 31, 2012	AM	cattle	Preston Kissman	B
Saturday, March 31, 2012	AM	sheep	Preston Kissman	B
Saturday, March 31, 2012	PM	cattle	Russ Ford	B
Saturday, March 31, 2012	PM	sheep	Russ Ford	B
Sunday, April 1, 2012	AM	cattle	Russ Ford	B
Sunday, April 1, 2012	AM	sheep	Russ Ford	B
Sunday, April 1, 2012	PM	cattle	Preston Kissman	B
Sunday, April 1, 2012	PM	sheep	Preston Kissman	B

** maximum of 25 runs per trial per day

ARENA TRIAL: SHEEP AND CATTLE ONLY Course B \$35.00 Pre-Entry \$40.00 Day of Trial
NOVICE & JUNIOR HANDLER TRIAL CLASS: \$15.00 Pre-Entry \$15.00 Day of Trial

The Junior Handler Trial Class is open to everyone up to 17 years of age and follows ASCA rules. The Novice Handler Trial Class is open to all handlers over 17 years of age who have not completed an OTD in the class of stock entered. See ASCA stock dog rules for complete details.

DATE PRE-ENTRIES OPEN: January 31, 2012 **DATE PRE-ENTRIES CLOSE:** March 15, 2012

SEND PRE-ENTRIES TO: Amy Krieger (Show Secretary) (806)367-1592
5601 White Fence Rd.
Canyon, Texas 79015

Make checks payable to Lone Star ASC. Use only ASCA approved entry forms (or copies) included with this flyer.
DON'T FORGET TO SIGN THE BACK OF THE FORM.

SCHEDULE ALL DAYS: 8:30 A.M. **HANDLER'S MEETING**
 9:00 A.M. **TRIAL BEGINS**

LUNCH: Available for purchase at the Trial both days.
* PM trails will begin after lunch

LSASC MEMBERSHIP MEETING AFTER P.M. TRIAL ON SATURDAY.

MOTELS: LaQuinta Motel Gainesville (940)665-5700
 Hampton Inn Gainesville (940)612-4300
 Holiday Inn Express Gainesville (940)665-0505

Special Notices to Exhibitors:

- Entries will be accepted on a first-come basis. Run order will be determined by the Course Director and posted prior to the beginning of the trial. The arena trial will consist of a maximum of 25 runs per trial per day.
- Entries open January 31, 2012. Entries will close the day of the trial before the Handler Meeting.
- All rules of the Australian Shepherd Club will apply.
- Trialing dogs can be dangerous. Dogs must be on a leash except when trialing. Individuals are responsible for any damage done to or by himself, his family, his visitors and his dogs.
- Lone Star ASC reserves the right to substitute a judge if necessary.
- Questions or conflicts should immediately be brought to the attention of the Course Director.
- Replacement costs or vet costs will be charged, whichever is less.
- Bitches in season will run last.
- Bring chairs and be prepared for any type of weather.
- Children must be accompanied by their parents at all times. Unsupervised children will not be allowed to remain at the farm due to liability, safety and other concerns.
- The Lone Star Australian Shepherd Club, Memac Ranch, John & Norma Hart assume no responsibility for accident, injury or theft.

DIAGRAMS OF ARENAS

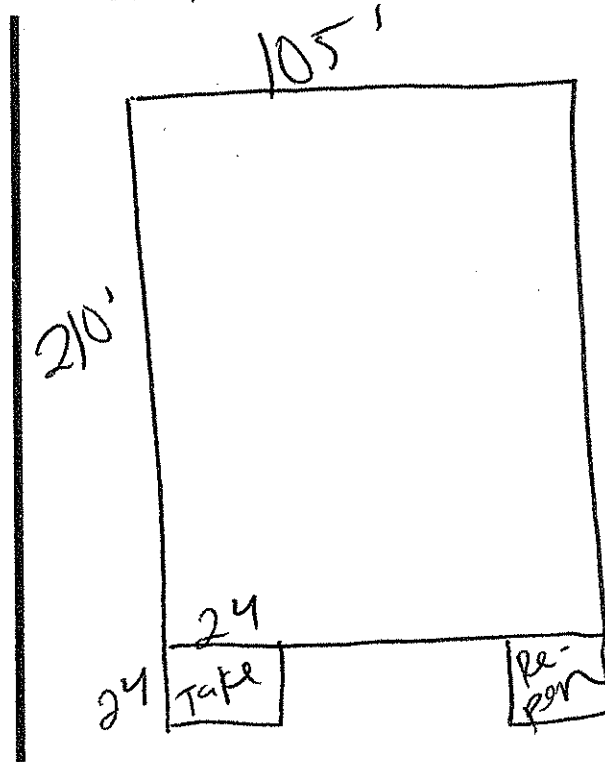
DIAGRAMS MUST BE LEGIBLE OR APPLICATION WILL BE RETURNED

Indicate and Sketch below:

- 1) Size and location of take pen
- 2) location of re-pen
- 3) Dimensions of arena

DUCK ARENA

CATTLE/SHEEP ARENA



IF MORE THAN TWO ARENAS ARE USED, SKETCH ON AN ADDITIONAL PAGE.

JUDGES ARE REQUIRED TO REPORT ANY IRREGULARITIES

Judge's Use Only: Trial was conducted according to ASCA® Rules. Yes No
Livestock was of suitable condition and number for this Trial. Yes No

Make additional comments below.

Signature of Judge

Comments:

SCHEDULE ALL DAYS: 8:30 A.M. HANDLER'S MEETING
 9:00 A.M. TRIAL BEGINS

LUNCH: Available for purchase at the Trial both days.
* PM trails will begin after lunch

LSASC MEMBERSHIP MEETING AFTER P.M. TRIAL ON SATURDAY.

MOTELS: LaQuinta Motel Gainesville (940)665-5700
 Hampton Inn Gainesville (940)612-4300
 Holiday Inn Express Gainesville (940)665-0505

Special Notices to Exhibitors:

- Entries will be accepted on a first-come basis. Run order will be determined by the Course Director and posted prior to the beginning of the trial. The arena trial will consist of a maximum of 25 runs per trial per day.
- Entries open January 31, 2012. Entries will close the day of the trial before the Handler Meeting.
- All rules of the Australian Shepherd Club will apply.
- Trialing dogs can be dangerous. Dogs must be on a leash except when trialing. Individuals are responsible for any damage done to or by himself, his family, his visitors and his dogs.
- Lone Star ASC reserves the right to substitute a judge if necessary.
- Questions or conflicts should immediately be brought to the attention of the Course Director.
- Replacement costs or vet costs will be charged, whichever is less.
- Bitches in season will run last.
- Bring chairs and be prepared for any type of weather.
- Children must be accompanied by their parents at all times. Unsupervised children will not be allowed to remain at the farm due to liability, safety and other concerns.
- The Lone Star Australian Shepherd Club, Memac Ranch, John & Norma Hart assume no responsibility for accident, injury or theft.

SCHEDULE ALL DAYS: 8:30 A.M. HANDLER'S MEETING
 9:00 A.M. TRIAL BEGINS

LUNCH: Available for purchase at the Trial both days.
* PM trails will begin after lunch

LSASC MEMBERSHIP MEETING AFTER P.M. TRIAL ON SATURDAY.

MOTELS: LaQuinta Motel Gainesville (940)665-5700
 Hampton Inn Gainesville (940)612-4300
 Holiday Inn Express Gainesville (940)665-0505

Special Notices to Exhibitors:

- Entries will be accepted on a first-come basis. Run order will be determined by the Course Director and posted prior to the beginning of the trial. The arena trial will consist of a maximum of 25 runs per trial per day.
- Entries open January 31, 2012. Entries will close the day of the trial before the Handler Meeting.
- All rules of the Australian Shepherd Club will apply.
- Trialing dogs can be dangerous. Dogs must be on a leash except when trialing. Individuals are responsible for any damage done to or by himself, his family, his visitors and his dogs.
- Lone Star ASC reserves the right to substitute a judge if necessary.
- Questions or conflicts should immediately be brought to the attention of the Course Director.
- Replacement costs or vet costs will be charged, whichever is less.
- Bitches in season will run last.
- Bring chairs and be prepared for any type of weather.
- Children must be accompanied by their parents at all times. Unsupervised children will not be allowed to remain at the farm due to liability, safety and other concerns.
- The Lone Star Australian Shepherd Club, Memac Ranch, John & Norma Hart assume no responsibility for accident, injury or theft.