

# Tri-County Australian Shepherd Working Association

[www.tricountyaussies.com](http://www.tricountyaussies.com)



## Farm (Cattle & Sheep) Trials

ASCA Sanctioned (Pending)

All Herding Breed Farm Trials

Friday, May 11, 2018

Location: 'Diamond Dogs K-9 Events, Chino CA

Judge: John Knepper

COURSE DIRECTOR: Marie Nagano, cell: 909-938-2996, Email: [naganom@earthlink.net](mailto:naganom@earthlink.net)

TRIAL SECRETARY: Debbie Thom, cell: 951-204-6926, email: [doglvr@gmail.com](mailto:doglvr@gmail.com);

Mail entries to Debbie: 13064 Tierra Canyon Drive, Moreno Valley, CA 92553

HANDLER'S MEETING AT 7:30 AM. FARM TRIAL STARTS AT 8:00 AM SHARP. Cattle Farm Trial will be run first, followed by the Sheep Farm Trial; not before noon. Exhibitors will be emailed entry confirmations and run numbers.

<u>Trials</u>	<u>PRE-Entries</u>	<u>POST-Entries</u>	<u>Stock</u>
Fri. am: Farm Trial Cattle (10 runs*)	\$75/Run	\$80/Run	5 mixed-breed Cattle
Fri. pm: Farm Trial Sheep (10 runs*)	\$60/Run	\$65/Run	8 head mixed-breed sheep

**\*Note: depending upon the number of entries for each trial, these numbers may be adjusted ~ please pre-enter!\***

Entry Form available at: <http://www.tricountyaussies.com> Mail Entry Form to Trial Secretary at the address above.

Please make checks payable to TCASWA. A \$25.00 service charge for returned checks.

**Entry Rules:** All ASCA rules and regulations will be followed. **Pre-Entries OPEN** with a postmark date of **April 10, 2018** and **CLOSE** with post mark of **May 1, 2018**. Any entry postmarked after May 1, 2018 will be charged at the post-entry rate. All entry forms must be completely filled out, in the event of duplicate postmark dates a drawing will determine which entry will be accepted. Refunds will not be made after the closing date unless the entry is filled from a waiting list. Run orders will be determined by random draw (by level) in advance of the trial. Each trial will start with the Advance runs, followed by Open runs. Bitches in season will be allowed to run and will run at the end of each trial. They must be crated when not competing. Substitutions will be allowed. Day of trial entries, if available, will be taken prior to the handlers meeting (7:30 a.m. for both Farm Trials). Tie breaker is gather points. **Farm Trial Divisions:** Open and Advanced. Dogs not registered with ASCA must have a tracking number if they wish to have any qualifying scores applied to titles. A service membership and tracking number application can be downloaded at: <http://asca.org/Portals/0/trackapp.pdf>

### RIBBONS & AWARDS

**Ribbons:** will be awarded for 1<sup>st</sup> through 4<sup>th</sup> Place and Qualifying Score for each class at each Trial. High Score will be awarded for each trial.

**Lunch:** [TBD]

**Hotels/Motels:** Extended Stay America ~ 4325 Corporate Center Ave, Chino, (909) 597-8675

Motel 6 – Chino ~ 12266 Central Ave., Chino, CA 91710 (909) 591-3877 or 1800-466-8356, [www.motel6.com](http://www.motel6.com)

**Please double check motel pet policy.**

**GENERAL** Dogs must be kept on leash or crated when not working. Individuals will be held responsible for damage to stock and/or equipment. Please clean up after yourself and your doggie(s). Parking will be in the parking lot near Hospitality. No vehicles will be allowed to park in the field behind the arenas.

**Diamond Dogs K-9 Events, 3349 Riverside Dr., Chino, California 91710**

**\*DIRECTIONS: From the South:** Take the 91 Freeway East to the 71 (Chino Valley Freeway ) North. Take 71 North to the Peyton / Riverside Drive exit. Turn right on Riverside Drive. Travel East 1/4th mile to Mc Croskey Road. (on the South / Right side of the street) Turn right on Mc Croskey Road. Drive to the end / entrance to Diamond Dogs K-9 Events. If you pass RESERVOIR Ave., you've gone too far.

**From the North:** Take the 10 Freeway East / 60 Freeway East to the 71 Freeway South. Take 71 South to the Peyton Drive exit. Turn left and drive under the 71 Freeway. Peyton Drive turns into Riverside Drive heading East. Travel East 1/4th mile to Mc Croskey Road. (on the South / Right side of the street) Turn right on Mc Croskey Road. Drive to the end / entrance to Winning Edge Dog Sports. . If you pass RESERVOIR Ave., you've gone too far.

**From the 60 FRWY:** Get off at Reservoir and head south. Turn Right on Riverside and a quick left on Mc Croskey.

**\*FACILITY OWNER:** Kathleen Smith (909) 680-2349

**Come join us for our Farm Trial! They are a lot fun!!**

Tri County ASWA Cattle Farm Trial      Friday May 11, 2018 AM

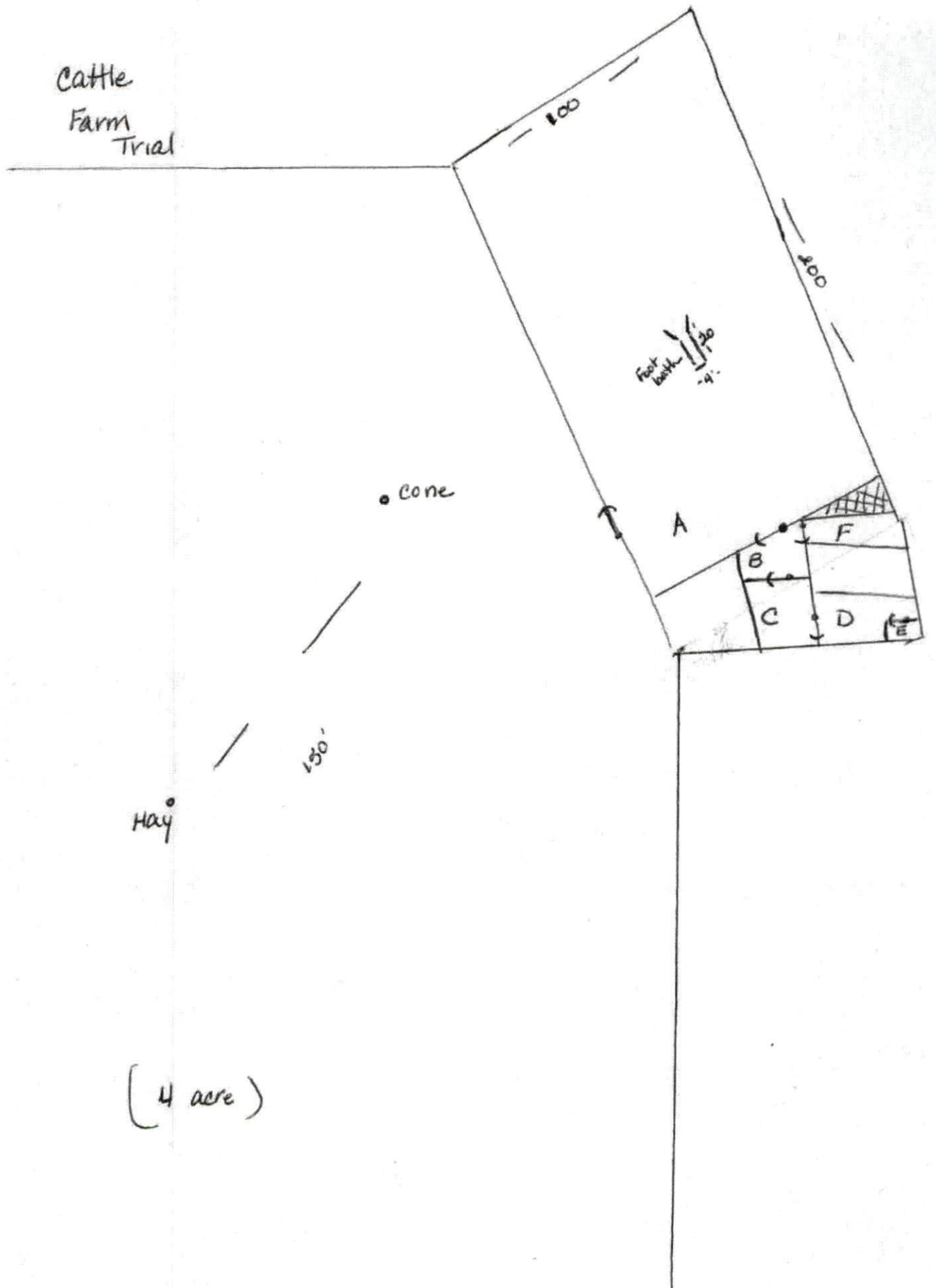
5 head of Mixed Cattle

Time: 25 Minutes \*All tasks must be performed\*

\*\* A 10 and 3 minute warning will be given

1. Gather- Cattle to Handler (Advanced handler stays at cone, Open- handler can go half way while dog starts from the cone).. Ends when cattle are in Pen A and gate is closed
2. Chute (Foot bath)- Cattle will be taken through the chute. (Advance must have the dog hold the cattle in the chute while the handler opens the chute gate. Open can open the gate at any time). Ends when cattle are through the chute
3. Pen work 1- take cattle from Pen A into Pen B. Starts after cattle have completed the chute and ends when gate is closed
4. Pen work 2- take cattle from Pen B to Pen C. Ends when gate is closed
5. Pen work 3-take cattle from pen C to D. Ends when gate is closed
6. Gate Sort- Sort 3 head of cattle (Judge will determine) into Pen E. Ends when gate is closed
7. Exhaust – rejoin the two groups and leave in pen D
8. Pen work 4- Open Pen F bring out cattle into Pen B. Ends when gate is closed
9. Pen work 5- Take cattle into Pen A. Ends when gate is closed
10. Task – Take Cattle out to Graze. ( Advanced handler stops at cone and dog drives the cattle 150' to the hay. Open handler can go half way). Task ends when Cattle get to feed.

Cattle  
Farm  
Trial



• Cone

Foot bath  
10  
20

A

B

F

C

D

E

Hay

150'

(4 acre)

Tri County ASWA Sheep Farm Trial      Friday May 11, 2018 PM

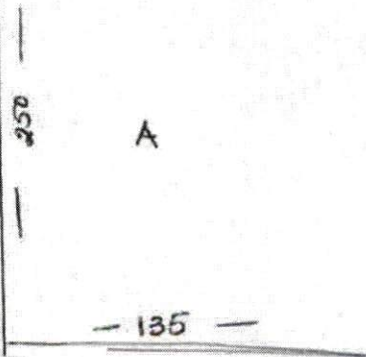
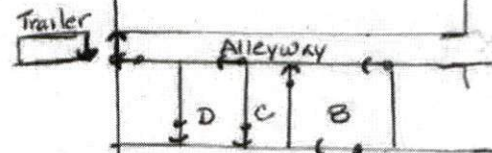
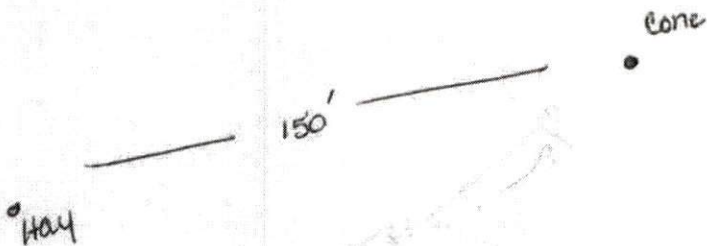
8 head of Mixed Sheep

Time : 25 Minutes \*All tasks must be performed\*

\*\*A 10 and 3 minute warning will be given

1. GATHER : sheep to Handler (Advance will stay at the cone. Open handler can go half way while dog starts from the cone). Starts when dog is sent, ends when sheep are in Pen A
2. Pen work 1- take sheep from the Pen A into Pen B. Ends when gate is closed
3. Gate Sort- Sort 3 head of Marked Sheep into Pen C. Ends when 3 head are in the pen and gate is closed
4. Task 1- the dog will hold the sheep so the handler can remove the collars/ribbon from the marked sheep. Task ends when ribbon is off the sheep.
5. Pen work 2 – Take the 5 remaining sheep into the alleyway. Ends when gate is closed
6. Chute work- take 5 head of sheep and load into trailer. Ends when trailer door is closed
7. Pen work 3- Remove sheep from trailer and put into Pen D. ends when gate is closed
8. Exhaust- Rejoin the two groups of sheep. Leave group in pen D
9. Pen work 4- Take new group of sheep from Pen B to Pen A. Ends when gate is closed
10. Task 2- Take Sheep out to Graze. (Advanced handler stops at cone and dog drives sheep 150' to the hay. Open handler can go half way). Task ends when sheep are on the hay

Sheep  
Farm  
Trial



(4 acre)