



Farm Dog Days of Summer

June 9-10, 2018

2 ASCA Farm Dog Trials

(sheep/cattle/ducks/mixed)

Hardrock Aussies Farm in Cartersville, GA

Pre-entries for all breeds April 23, 2018. Pre-entries must be postmarked prior to closing date May 23, 2018.

Entries must have clearly visible USPS postmark. No meter mail allowed. No DHL. UPS, telephone, email, or faxed entries will be accepted. Overnight entries accepted only if signature is waived. Day of entries will be happily accepted for any available class. The waiting list will be used in the event of competitor withdraw or no-show.

Make checks payable to GAASC. Mail entries to GAASC, Wendy Eldredge 155 Reynolds St SW Marietta, GA 30064.

Judges: Rachel Vest of Jefferson, GA on Saturday Wayne Kirby of Carrollton, GA on Sunday

Course Director: Terry Dickey
Terrydickey17@yahoo.com

Farm/Stock Owner: Cheryl Padgett
hardrockaussies@yahoo.com

Trial Secretary: Wendy Eldredge
wigglywendy@yahoo.com

Pre-entries: Cattle \$60, Mixed \$50. Sheep \$50, Ducks \$40, day of entries additional \$10 each class of stock

Cattle (beef mix-breed), Mixed Sheep/Ducks, Sheep (hair mix-breed), Ducks (mix-breeds) (actual run order may vary)

Stock head count will be 5 cattle, 5 sheep, 5 ducks and 5 each sheep and ducks for the mixed.

Entries will be limited to less than 10 hours of judging time with a maximum of 9 cattle runs each day. Run order will be random draw and begin with advanced.

6:30am gates open, parking in lower pasture only unless otherwise directed

6:30-7:15am day of entries taken, check-in and move ups. Run orders will be posted.

7:15am handler's meeting with trial to start immediately afterward

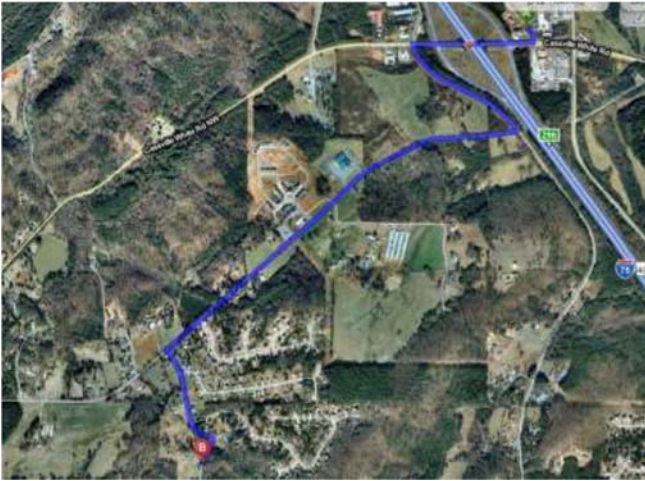
Trial Awards: Flat ribbon for 1st through 4th place and qualifying scores, High Combined Award

Please check the trial table for other prizes not yet specified

ATTENTION EXHIBITORS

All trials will be conducted under the rules and regulations of ASCA Stockdog program. The rule book is available at <http://www.asca.org/wp-content/uploads/sites/35/2016/04/StockdogRules.pdf> or call ASCA at 979-778-1082. Disputes must be brought to the immediate attention of the course director and will in all cases follow the dispute regulations outlined in the ASCA Stockdog rule book, pages 76-83. Bitches in heat will run in draw order. Entry fees will not be refunded in the event a dog is absent, disqualified, excused, or barred from competition by action of the show committee. Entry fees will only be refunded if the refund request is received before the pre-entry closing date, no entry fee will be refunded if the show cannot be opened or completed by reasons of riots, civil disturbances, fire, Acts of God, or public emergency. The show-giving club, the Show Chairman, their agents, officers, and/or committee shall assume no responsibility for injury to children. Judges may be substituted. All dogs must be leashed or crated at all times, except when competing. No electrical and/or mechanical training devices will be permitted on the show grounds. Please clean up after your dogs. For the safety of your dogs and others all dogs must have current vaccinations against rabies, distemper/parvo, you are asked to bring a copy of the rabies certificate with you. There will be a \$35.00 service charge for any returned checks. Refunds issued up to pre-entry deadline. Substitutions allowed with dogs that you own or co own.

This is a private farm, so please treat it with respect.



Directions to show site: Address for GPS 445 Shinall Gaines Rd NW Cartersville, GA 30121. From Interstate 75 take exit 296 (Cassville-White Rd.) turn West (from Atlanta it's a left turn) and turn left on first road—Peoples Valley Road (if you pass the gas stations you went too far). Go .4 miles and turn Right on Old Cass-White Road. Go 1.3 miles and turn Left onto Shinall Gaines Rd. Go about .2 miles; Farm is on right. Look for Black Gate.

OVERNIGHT PARKING IS NOT AVAILABLE AT TRIAL SITE

Camping: KOA - 800 Cassville White Rd Nw, Cartersville, GA 30121 (770) 382-7330

Hotels Double check pet policy before booking your rooms.

Cartersville North Inn & Suites – 11 Kent Dr NW, Cartersville, GA (770) 386-9259 (Host Motel – ask for 'dog show' rate)

Microtel Inn and Suite – 1348 Joe Frank Harris Pkwy, Cartersville, GA (678) 605-9331 (30 pound limit) Days Inn - 5618 Hwy. 20 Se, Cartersville, GA (770) 382-1824

Best Western Garden Inn & Suites - 5663 Highway 20 NE, Cartersville, GA (770) 386-1569

Hampton Inn - 5600 Hwy. 20 Se, Cartersville, GA (770) 382-8999

Knights Inn - 420 E Church St, Cartersville, GA (770) 386-7263

Quality Inn -235 S. Dixie Ave., Cartersville, GA (770) 386-1361

Red Roof Inn – 28 Hwy 20 Spur, I-75 exit 290, Cartersville, GA (770) 387-1800

Please, no dog washing in the motels, and please pick up after your dog at the motel and show grounds. Be sure to check with your hotel choice about pets prior to booking (pet policies change without notification)

Vet: Westside Animal Hospital, Dr. Lisa Walker 201 Doulthit Ferry Rd. Cartersville, GA 30120 (770) 607-3055

Emergency after hours (770) 547-9153 <http://www.cartersvillevets.com/westside-animal-hospital/>

Farm Trial 1 – Cattle
Saturday June 9th, 2018

Time: 18 minutes, warnings at 10 and 3 minutes

Tie Breaker: #1 GATHER, #2 SORT

Tasks must be completed in order. Handler is responsible for closing all gates including chute back gate and head gate. Course will start with 5 head of stock in Pens 6, 7 and 8 with all course gates closed.

Task	Points
PEN #1 – move stock from Pen Specified by Judge into Pen 1	6
PEN #2 – move stock from Pen 1 into Pasture	7
TASK #1, FIELD WORK – move stock to driveway end of Pasture, call dog off and move to cone Advanced handler drives stock, Open handler may drive or fetch	20
GATHER – send dog from cone to gather stock into Pen 1 Advanced handler stays at cone until dog is sent, Open handler may move up halfway before sending dog	20
PEN #3 – move stock from Pen 1 into Pen 2	6
SORT – sort 3 marked head into Pen 3 from Pen 2, then reunite all in Pen 2 Sort direction at handler's discretion	25
TASK #2, FOOTBATH – move stock from Pen 2 thru Footbath into Pen 4	20
PEN #4 – move stock from Pen 4 into Chute	6
CHUTE – inspect/doctor stock and move into open pen Advanced handler sprays stock for parasites, Open handler inspects stock	20

Farm Trial 1 – Mixed
Saturday June 9th, 2018

Time: 14 minutes, warnings at 7 and 3 minutes

Tie Breaker: #1 GATHER, #2 SORT

Tasks must be completed in order. Handler is responsible for closing all gates including chute back gate and head gate. Course will start with 5 head of sheep in Pens G, H, I and J with trailer gate open and all other gates closed, 5 head of ducks in Gather basket.

Task	Points
SHEEP PEN #1 – move stock from Judge Specified Pen into Pen E	5
SHEEP PEN #2 – move stock from Pen E through Arena into Pen B Advanced handler must stay close to back fence, Open handler may move anywhere in Arena	10
SHEEP SORT – sort 3 marked head into Pen C from Pen B, then reunite all in Pen B Sort direction at handler's discretion	25
SHEEP TASK #1 TRAILER – move stock from Pen B through Pen D and load stock into trailer Unload stock and move stock back into Pen B (leave trailer gate open)	20
Time will stop when dog and handler move out of Pen B to Alley and gate is closed. Time will restart when dog is sent for Duck Gather.	
DUCK GATHER – send dog from spigot to gather stock into Large Pen Advanced handler stays at spigot until dog is sent, Open handler may move up halfway before sending dog	20
DUCK TASK #2, FOOTBATH – move stock thru Footbath Advanced handler must stay 5' from Foot Bath until stock enters Footbath, Open handler may move anywhere	20
DUCK CHUTE – move stock into chute, spray for parasites and release through Large Pen into Pen 1	20
DUCK PEN #3 – move stock from Pen 1 into Pen 2	5
DUCK PEN #4 – move stock from Pen 2 into Alley	5

Farm Trial 1 – Sheep
Saturday June 9th, 2018

Time: 14 minutes, warnings at 7 and 3 minutes

Tie Breaker: #1 GATHER, #2 SORT

Tasks must be completed in order. Handler is responsible for closing all gates including chute back gate and head gate. Course will start with 5 head of stock in Pens 6, 7 and 8 with all course gates closed.

Task	Points
PEN #1 – move stock from Pen Specified by Judge into Pen 1	6
PEN #2 – move stock from Pen 1 into Pasture	7
TASK #1, FIELD WORK – move stock to driveway end of Pasture, call dog off and move to cone Advanced handler drives stock, Open handler may drive or fetch	20
GATHER – send dog from cone to gather stock into Pen 1 Advanced handler stays at cone until dog is sent, Open handler may move up halfway before sending dog	20
PEN #3 – move stock from Pen 1 into Pen 2	6
SORT – sort 3 marked head into Pen 3 from Pen 2, then reunite all in Pen 2 Sort direction at handler's discretion	25
TASK #2, FOOTBATH – move stock from Pen 2 thru Footbath into Pen 4	20
PEN #3 – move stock from Pen 4 into Chute	6
CHUTE – inspect/doctor stock and move into open pen Advanced handler sprays stock for parasites, Open handler inspects stock	20

Farm Trial 1 – Ducks
Saturday June 9th, 2018

Time: 12 minutes, warnings at 7 and 3 minutes

Tie Breaker: #1 GATHER, #2 SORT

Tasks must be completed in order. Handler is responsible for closing all gates including chute back gate and head gate. Course will start with 5 head of stock in Gather basket and all gates closed.

Task	Points
GATHER – send dog from spigot to gather stock into Large Pen Advanced handler stays at spigot until dog is sent, Open handler may move up halfway before sending dog	20
PEN #1 – move stock from Large Pen into Pen 1	10
SORT – sort 3 marked head into Pen 2 from Pen 1 then reunite all in Pen 1 Sort direction at handler's discretion	25
PEN #2 – move stock from Pen 1 into Large Pen	5
TASK #1 BRIDGE – move stock over Bridge and clockwise through Underpass Advanced handler must stay behind Underpass until stock enters bridge, Open handler may move anywhere	20
TASK #2, FOOTBATH – move stock from Underpass thru Footbath Advanced handler must stay 5' from Foot Bath until stock enters Footbath, Open handler may move anywhere	20
CHUTE – move stock into chute, inspect than release through Large Pen into Pen 1	20
PEN #3 – move stock from Pen 1 into Pen 2	5
PEN #4 – move stock from Pen 2 into Alley	5

Farm Trial 2 – Cattle
Sunday June 10th, 2018

Time: 18 minutes, warnings at 10 and 3 minutes

Tie Breaker: #1 SORT, #2 GATHER

Tasks must be completed in order. Handler is responsible for closing all gates including chute back gate and head gate. Course will start with 5 head of stock in Pens 6, 7 and 8 with all course gates closed and feed in feed bunk.

Task	Points
PEN #1 – move stock from Pen Specified by Judge through Pen 1 into Pen 2	10
SORT – sort 3 marked head into Pen 3 from Pen 2, then reunite all in Pen 1 Sort direction at handler's discretion	25
PEN #2 – move stock from Pen 1 to Pasture	5
TASK #1 FIELD WORK – move stock to feed bunk in Pasture, call dog off and move to cone Advanced handler drives stock, Open handler may drive or fetch	20
GATHER – send dog from cone to gather stock and move stock to Pen 1 Advanced handler stays at cone until dog is sent, Open handler may move up halfway before sending dog	20
PEN #3 – move stock from Pen 1 to Pen 2	5
TASK #2, FOOTBATH – move stock from Pen 2 thru Footbath to Pen 4	20
PEN #4 – move stock from Pen 4 into Chute	5
CHUTE – inspect/doctor stock and move to open pen Advanced handler sprays stock for parasites, Open handler inspects stock	20

Farm Trial 2 – Mixed
Sunday June 10th, 2018

Time: 14 minutes, warnings at 7 and 3 minutes

Tie Breaker: #1 SORT, #2 GATHER

Tasks must be completed in order. Handler is responsible for closing all gates including chute back gate and head gate. Course will start with 5 head of ducks in Pen 3, 5 head of sheep in Pens G, H, I and J with trailer gate open and all other gates closed.

Task	Points
DUCK PEN #1 – move stock from Pen 3 into Large Pen	6
DUCK TASK #1, FOOTBATH – move stock thru Footbath Advanced handler must stay 5' from Foot Bath until stock enters Footbath, Open handler may move anywhere	20
DUCK CHUTE – move stock into chute, load stock into Crate and move Crate to Wagon	20
DUCK GATHER – send dog from spigot to gather stock through Large Pen into Pen 1 Advanced handler stays at spigot until dog is sent, Open handler may move up halfway before sending dog	20
DUCK PEN #2 – move stock from Pen 1 through Pen 2 into Alley	6
Time will stop when DUCK Alley gate is closed. Time will restart when gate for SHEEP PEN #3 is opened.	
SHEEP PEN #3 – move stock from Judge Specified Pen into Pen B	6
SHEEP SORT – sort 3 marked head into Pen C from Pen B, then reunite all in Pen B Sort direction at handler's discretion	25
SHEEP TASK #1 TRAILER – move stock from Pen B through Pen D and load stock into trailer Unload stock and move stock back into Pen B (leave trailer gate open)	20
SHEEP PEN #4 – move stock from Pen B into open pen Advanced handler stays at gate while dog moves stock out of pen, Open handler may move anywhere	7

Farm Trial 2 – Sheep
Sunday June 10th, 2018

Time: 14 minutes, warnings at 7 and 3 minutes

Tie Breaker: #1 SORT, #2 GATHER

Tasks must be completed in order. Handler is responsible for closing all gates including chute back gate and head gate. Course will start with 5 head of stock in Pens 6, 7 and 8 with all course gates closed and feed in feed bunk.

Task	Points
PEN #1 – move stock from Pen Specified by Judge through Pen 1 into Pen 2	10
SORT – sort 3 marked head into Pen 3 from Pen 2, then reunite all in Pen 1 Sort direction at handler's discretion	25
PEN #2 – move stock from Pen 1 to Pasture	5
TASK #1 FIELD WORK – move stock to feed bunk in Pasture, call dog off and move to cone Advanced handler drives stock, Open handler may drive or fetch	20
GATHER – send dog from cone to gather stock and move stock to Pen 1 Advanced handler stays at cone until dog is sent, Open handler may move up halfway before sending dog	20
PEN #3 – move stock from Pen 1 to Pen 2	5
TASK #2, FOOTBATH – move stock from Pen 2 thru Footbath to Pen 4	20
PEN #4 – move stock from Pen 4 into Chute	5
CHUTE – inspect/doctor stock and move to open pen Advanced handler sprays stock for parasites, Open handler inspects stock	20

Farm Trial 2 – Ducks
Sunday June 10th, 2018

Time: 12 minutes, warnings at 7 and 3 minutes

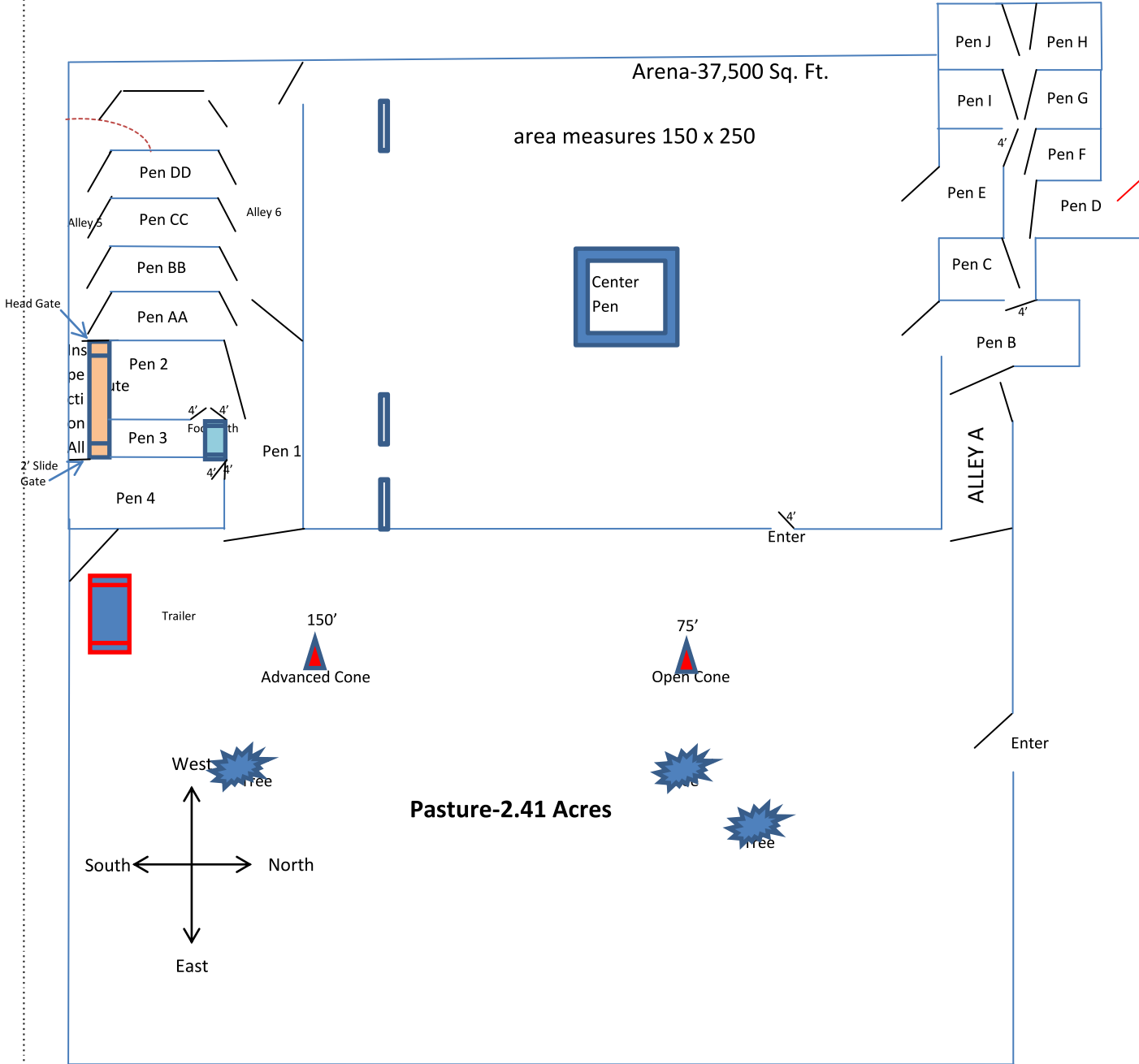
Tie Breaker: #1 SORT, #2 GATHER

Tasks must be completed in order. Handler is responsible for closing all gates including chute back gate and head gate. Course will start with 5 head of stock in Pen 3 and all gates closed.

Task	Points
PEN #1 – move stock from Pen 3 into Large Pen	6
TASK #1 BRIDGE – move stock over Bridge and clockwise through Underpass Advanced handler must stay behind Underpass until stock enters bridge, Open handler may move anywhere	20
TASK #2, FOOTBATH – move stock from Underpass thru Footbath Advanced handler must stay 5' from Foot Bath until stock enters Footbath, Open handler may move anywhere	20
CHUTE – move stock into chute, load stock into Crate and move Crate to Wagon	20
GATHER – send dog from spigot to gather stock into Large Pen Advanced handler stays at spigot until dog is sent, Open handler may move up halfway before sending dog	20
PEN #2 – move stock from Large Pen into Pen 1	7
SORT – sort 3 marked head into Pen 2 from Pen 1 then reunite all in Pen 1 Sort direction at handler's discretion	25
PEN #3 – move stock from Pen 1 into Pen 2	6
PEN #2 – move stock from Pen 2 into Alley	6

Farm Trial Sheep and Cattle diagram

Greater Atlanta ASC All Breed Farm Dog Trial



South-side Pen Dimensions

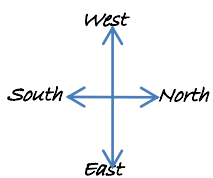
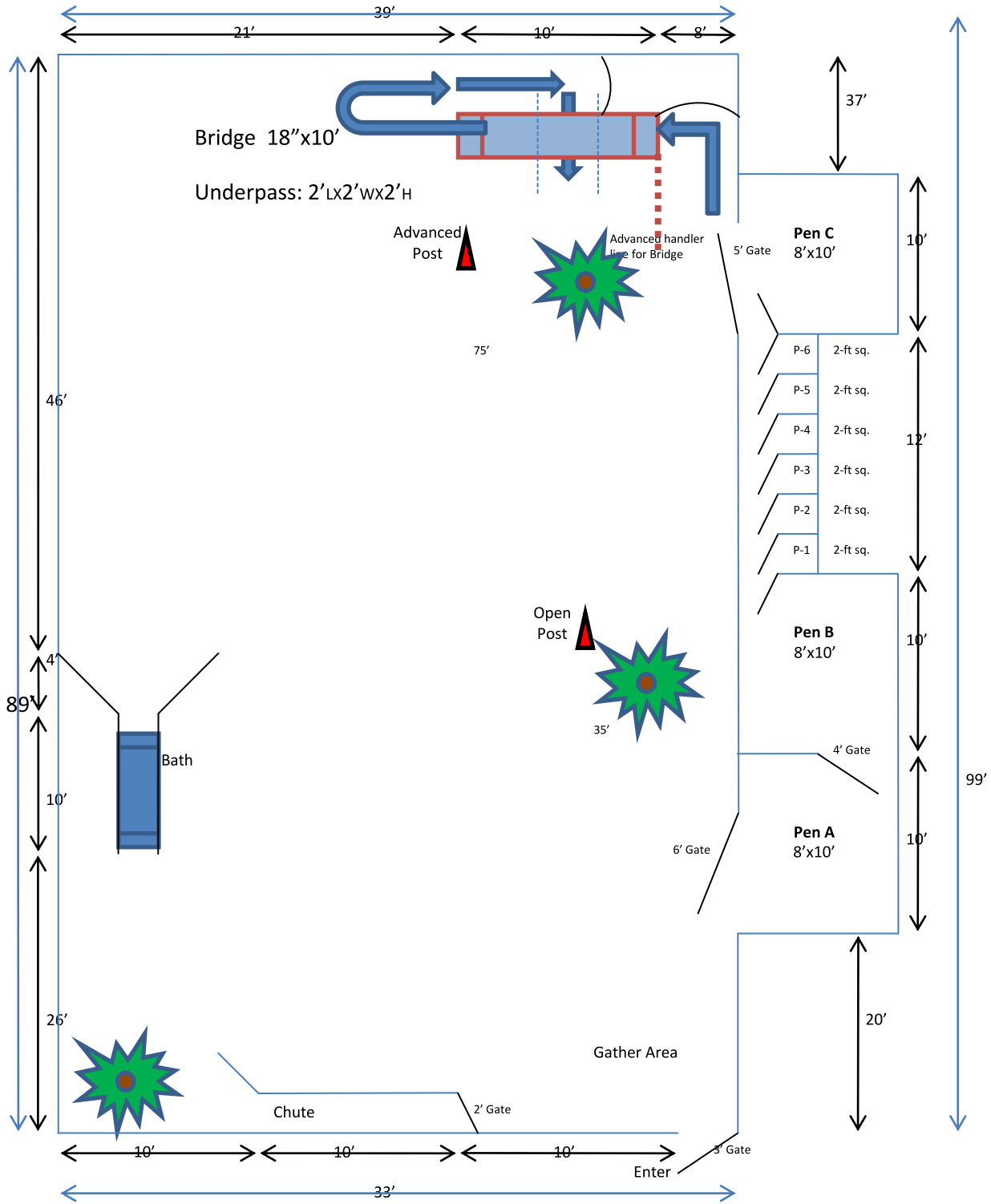
- 1- Gather Alley 12'x36'
- 2- Gather Pen 12'x16'
- 3- Sort Pen 12'x12'
Foot Bath 4'x12'
- 4- Crowding Pen 16'x20'
Working Chute 30'x24'
Sorting Alley 5 4'x48'
Alley 6 10'x48'
AA-DD Holding Pens 12'x12'

All gates are 12' unless otherwise noted
Drawing not to scale

North-side Pen Dimensions

- A- Gather Alley 12'x65' (Alley A)
- B- Pen Alley 4'x60' (Alley B)
- C- Gather Pen 20'x20' (Pen B)
- D- Sort Pen 12'x12' (Pen C)
- E- Loading Pen 12'x12' (Pen D)
- F- Gather/Holding Pen 12'x20' (Pen E)
- F-J Holding Pens 12'x12'

Greater Atlanta ASC Farm Dog Trial (Ducks)



All Gates are 2' except as noted
Drawing not to scale

